

Simple iLife '11 Guide

shah@mac.com

Photo Booth



Click Photo Booth icon in Dock.



Click the red button to take a picture.



Click Effects.



Play around with the different effects and take a few more pictures.



Quit Photo Booth (you will need to move your cursor to the very top of the screen to see the Photo Booth menu, alternatively, use the Command-Q keyboard shortcut.)

iPhoto



Click the iPhoto icon in the Dock.



Click Yes.



Look up Photo Locations

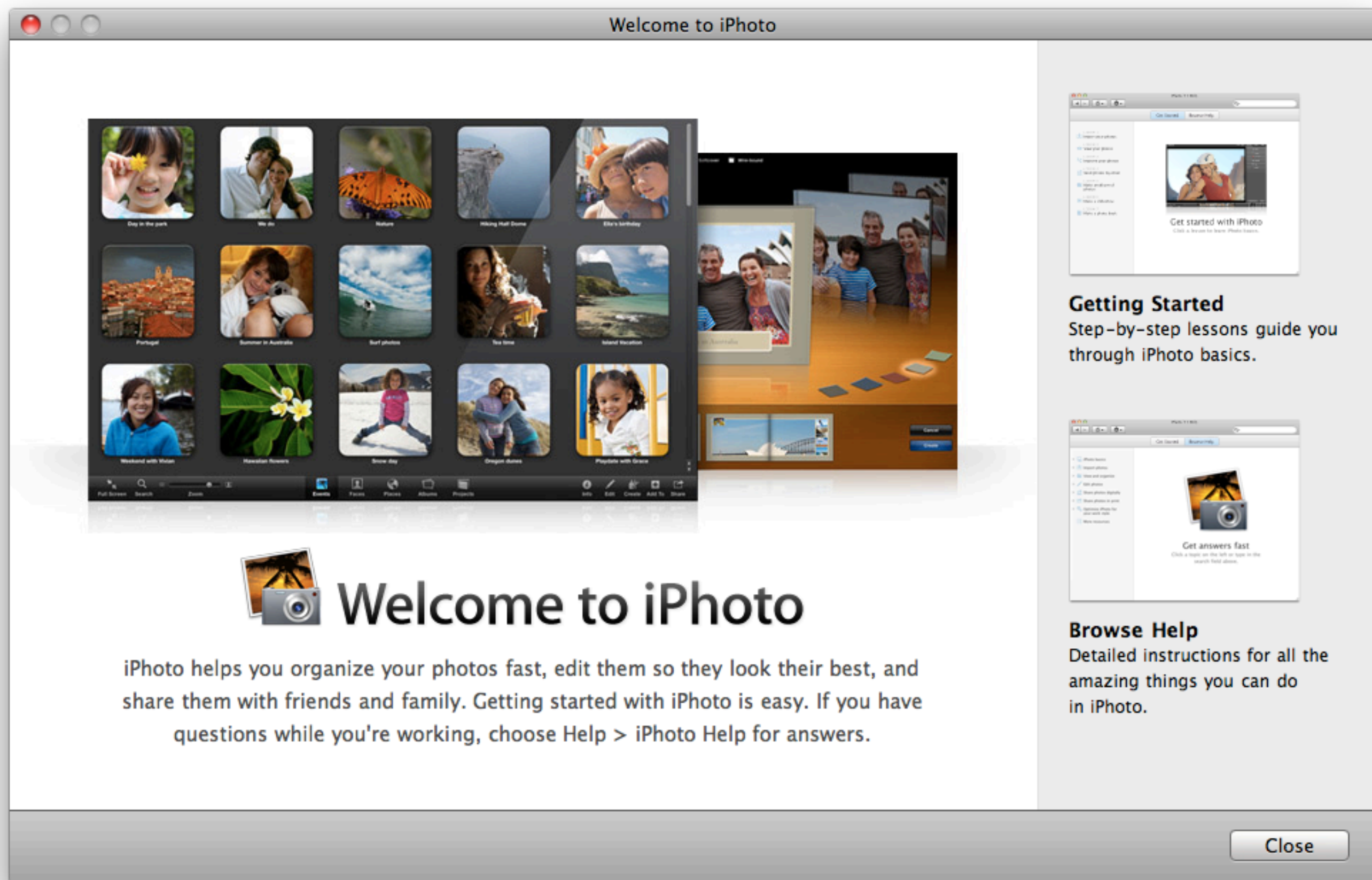
Would you like to see your photos on a map?

To do this, iPhoto must send GPS coordinates in your photos to an Apple server to get city, state, and other information.

No

Yes

Click Yes.



Welcome to iPhoto

iPhoto helps you organize your photos fast, edit them so they look their best, and share them with friends and family. Getting started with iPhoto is easy. If you have questions while you're working, choose Help > iPhoto Help for answers.



Getting Started

Step-by-step lessons guide you through iPhoto basics.



Browse Help

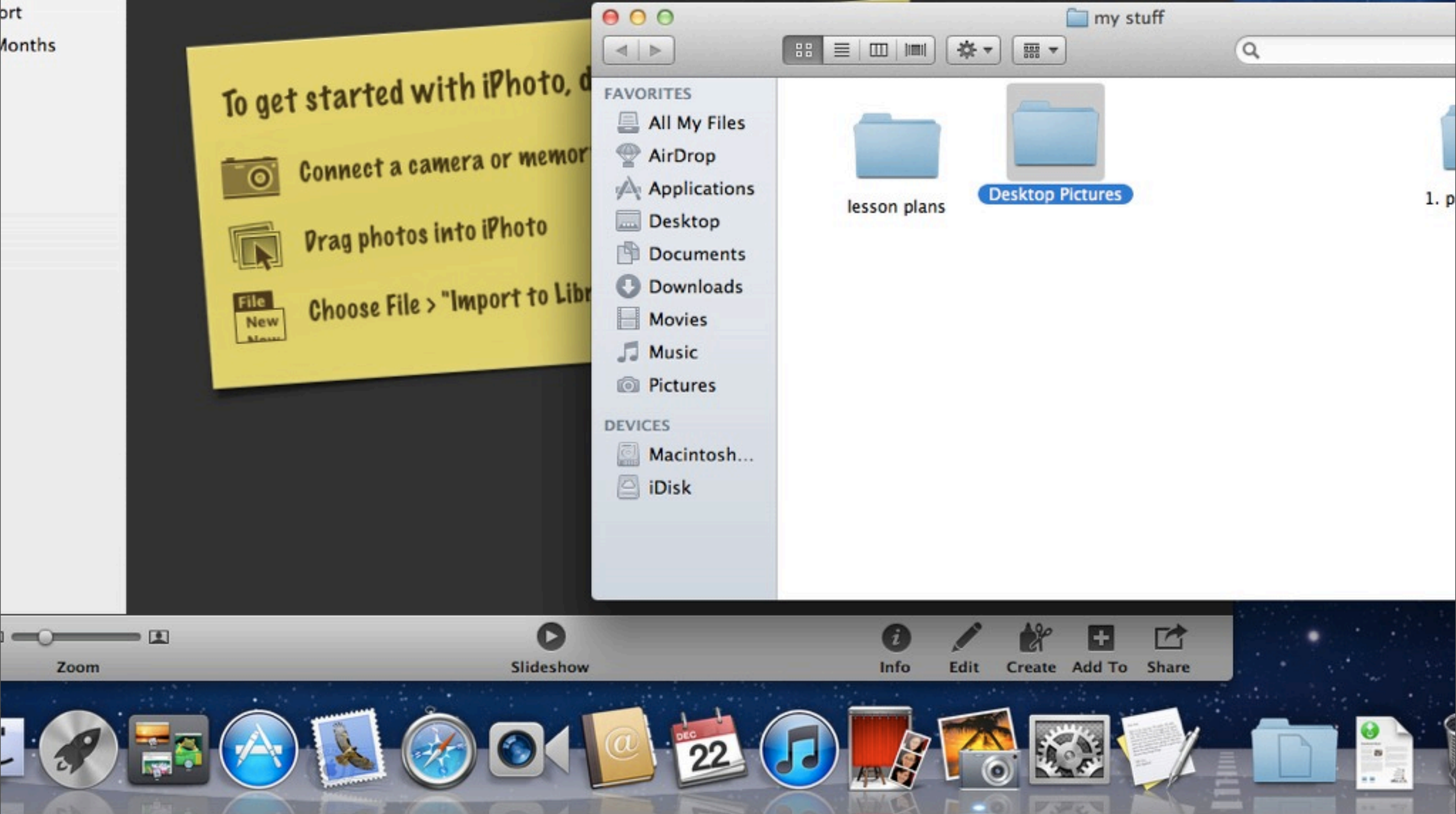
Detailed instructions for all the amazing things you can do in iPhoto.

Close

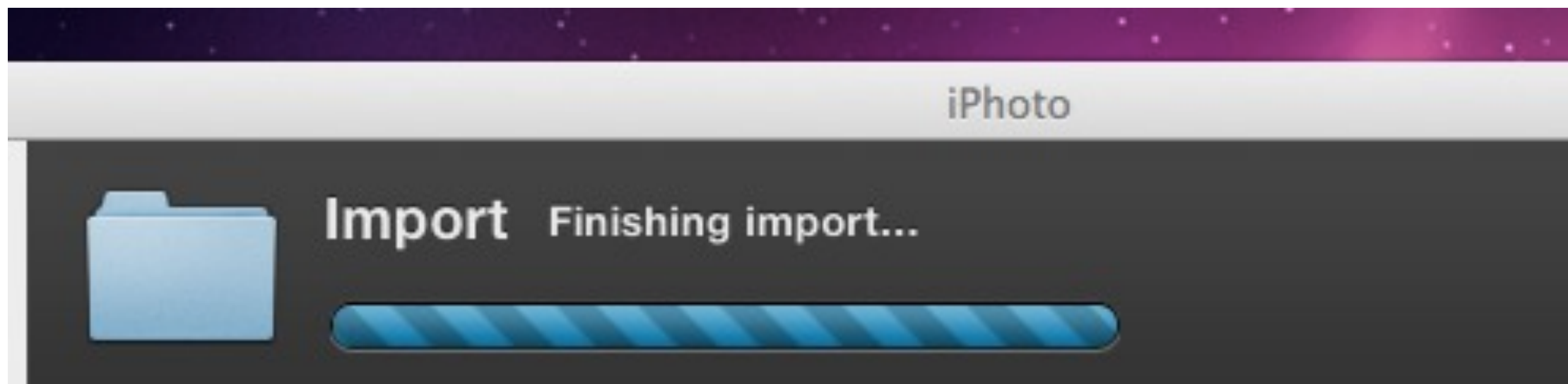
Click Close.



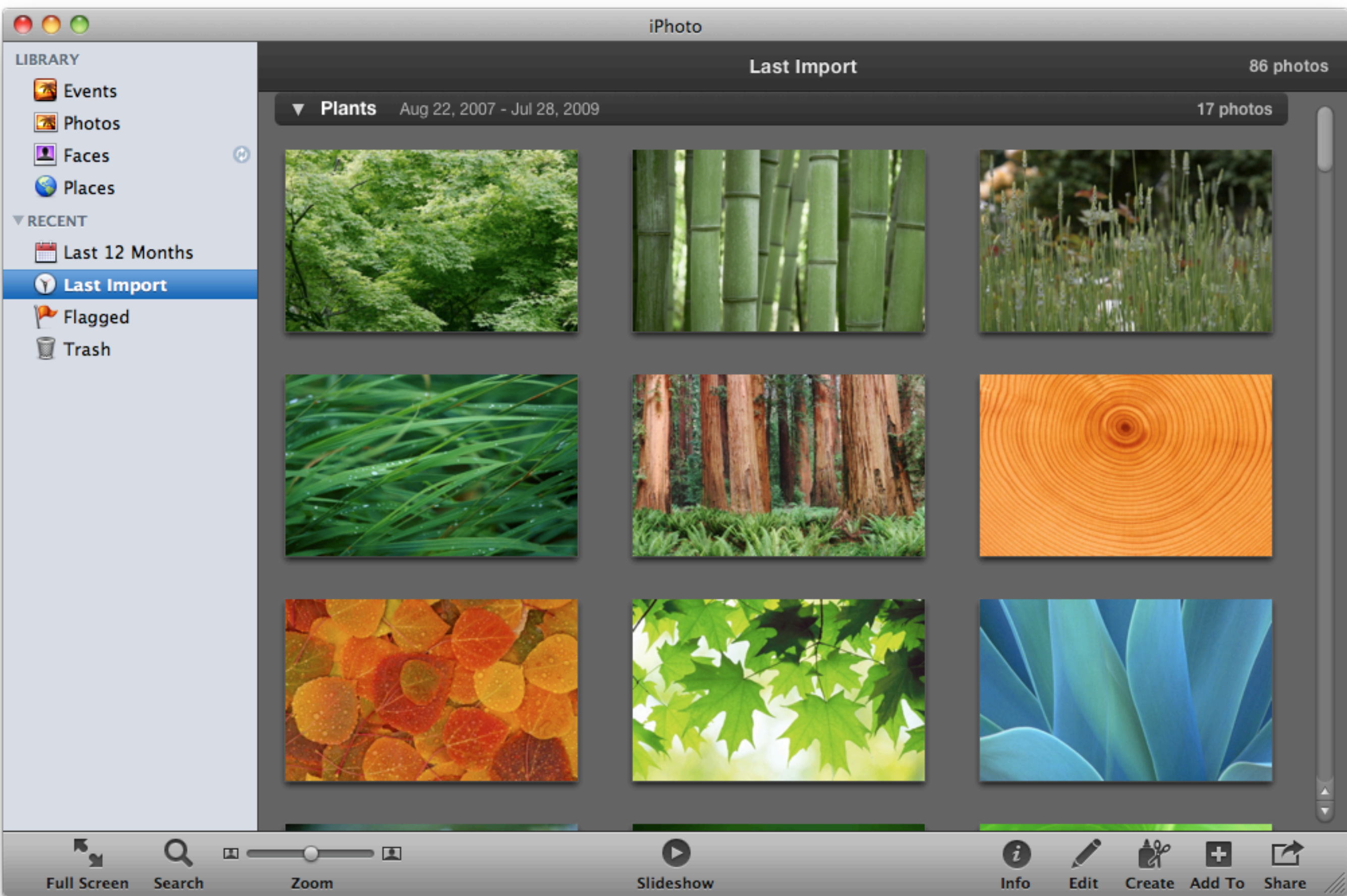
Open the my stuff folder you created earlier.



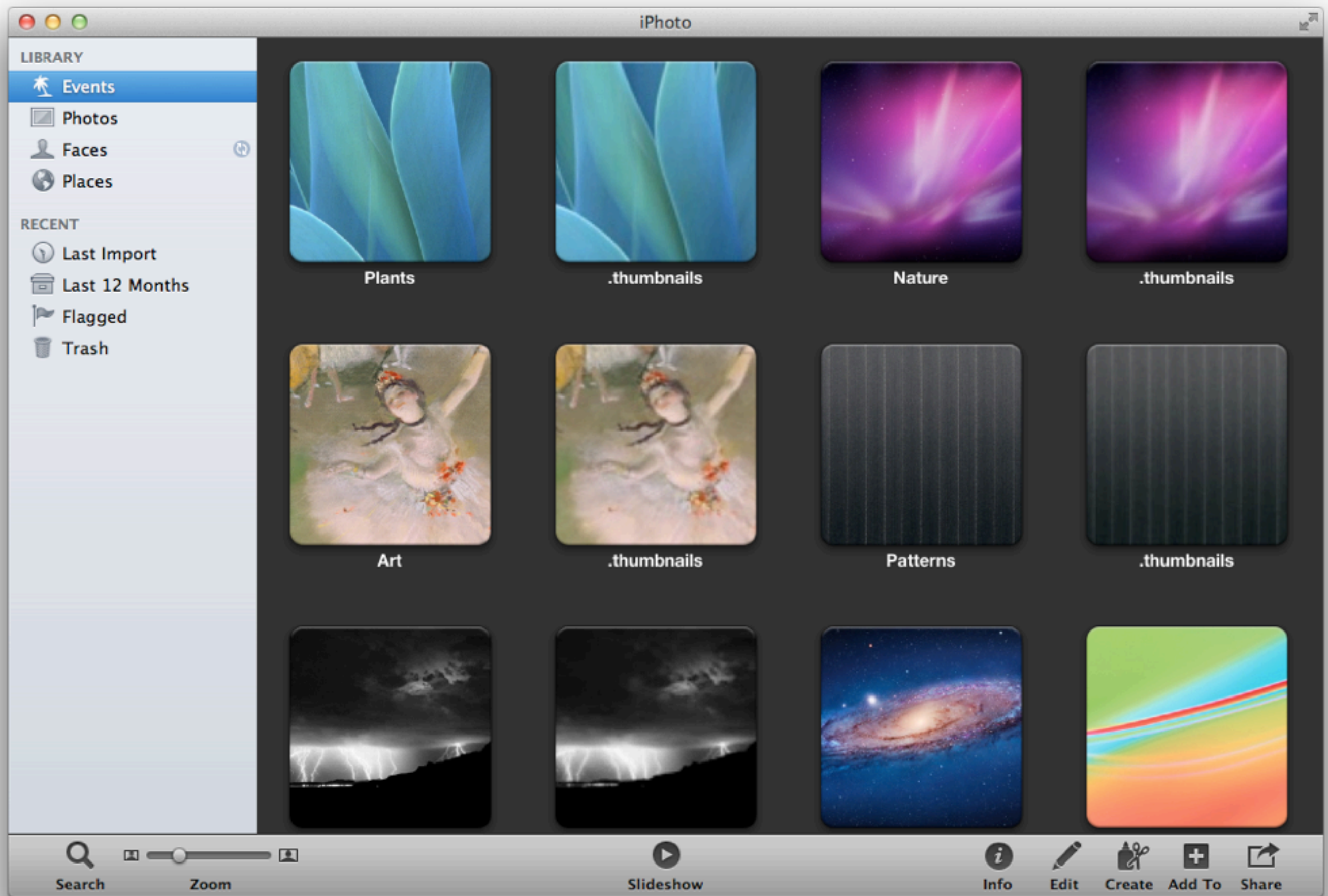
Drag Desktop Pictures into the iPhoto window to import them.



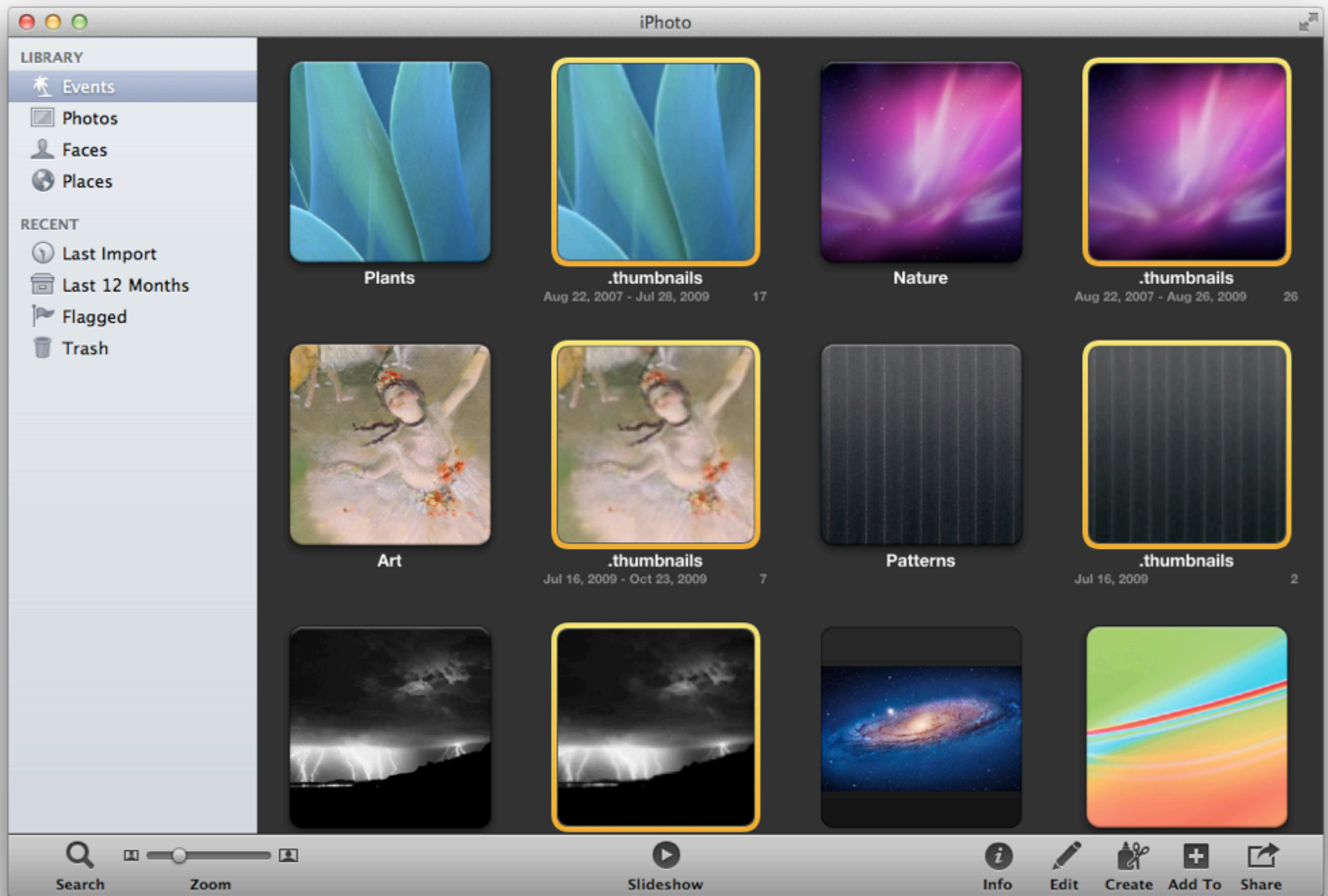
Wait until the import finishes.



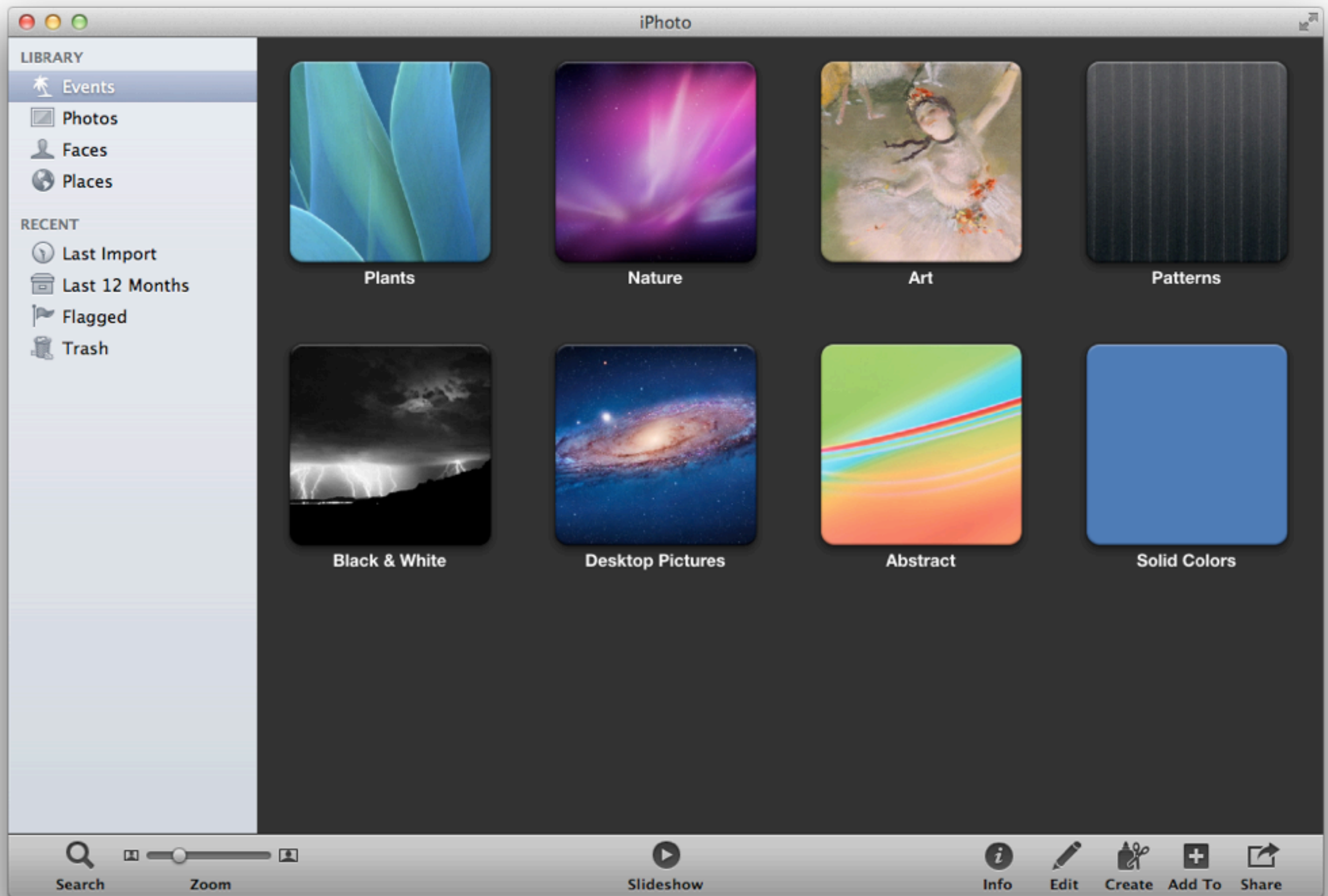
Click Events after all the pictures have been imported.



Select all the .thumbnails folders (Use Command-click to select).



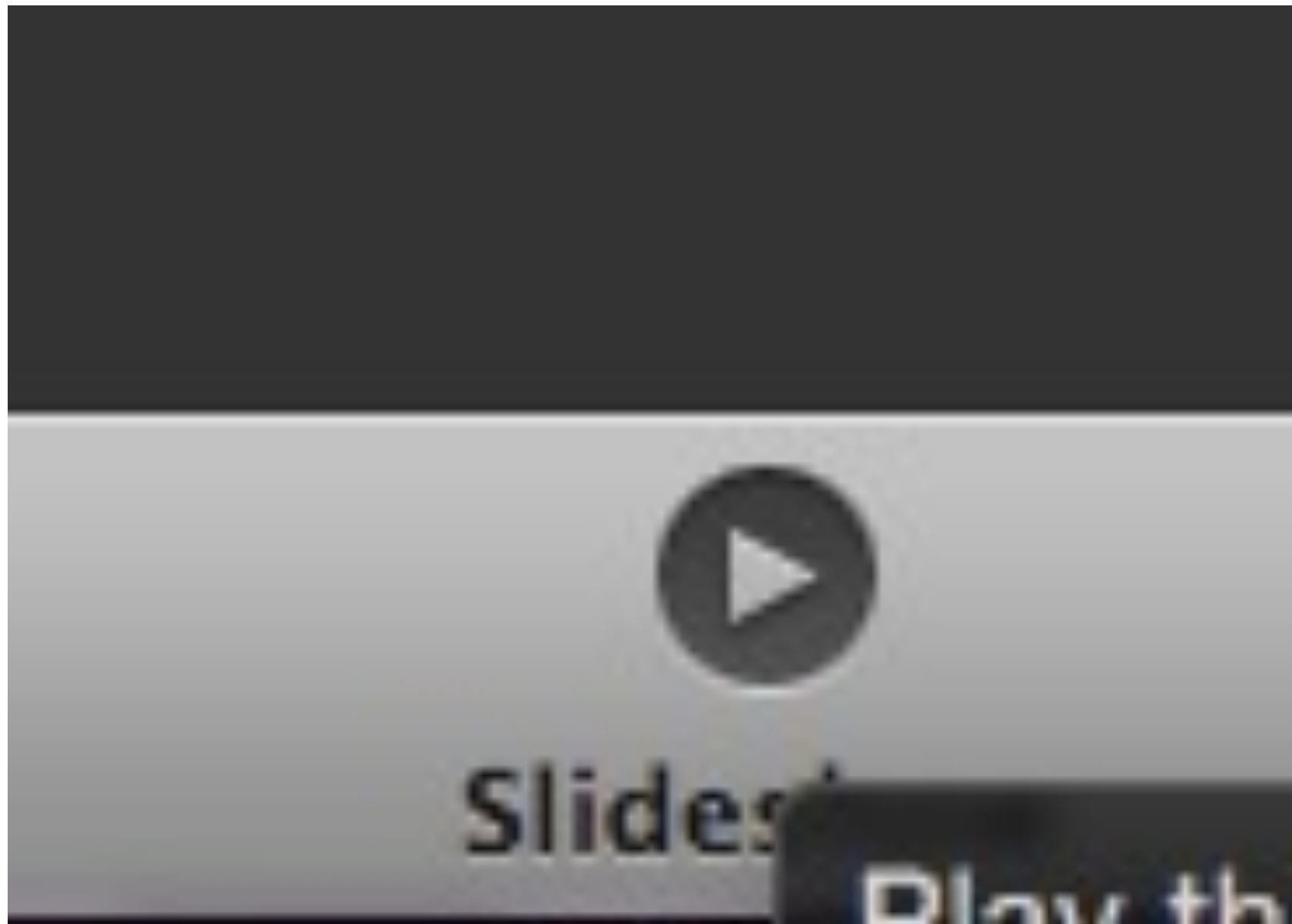
press Command-Delete to remove all the selected folders.



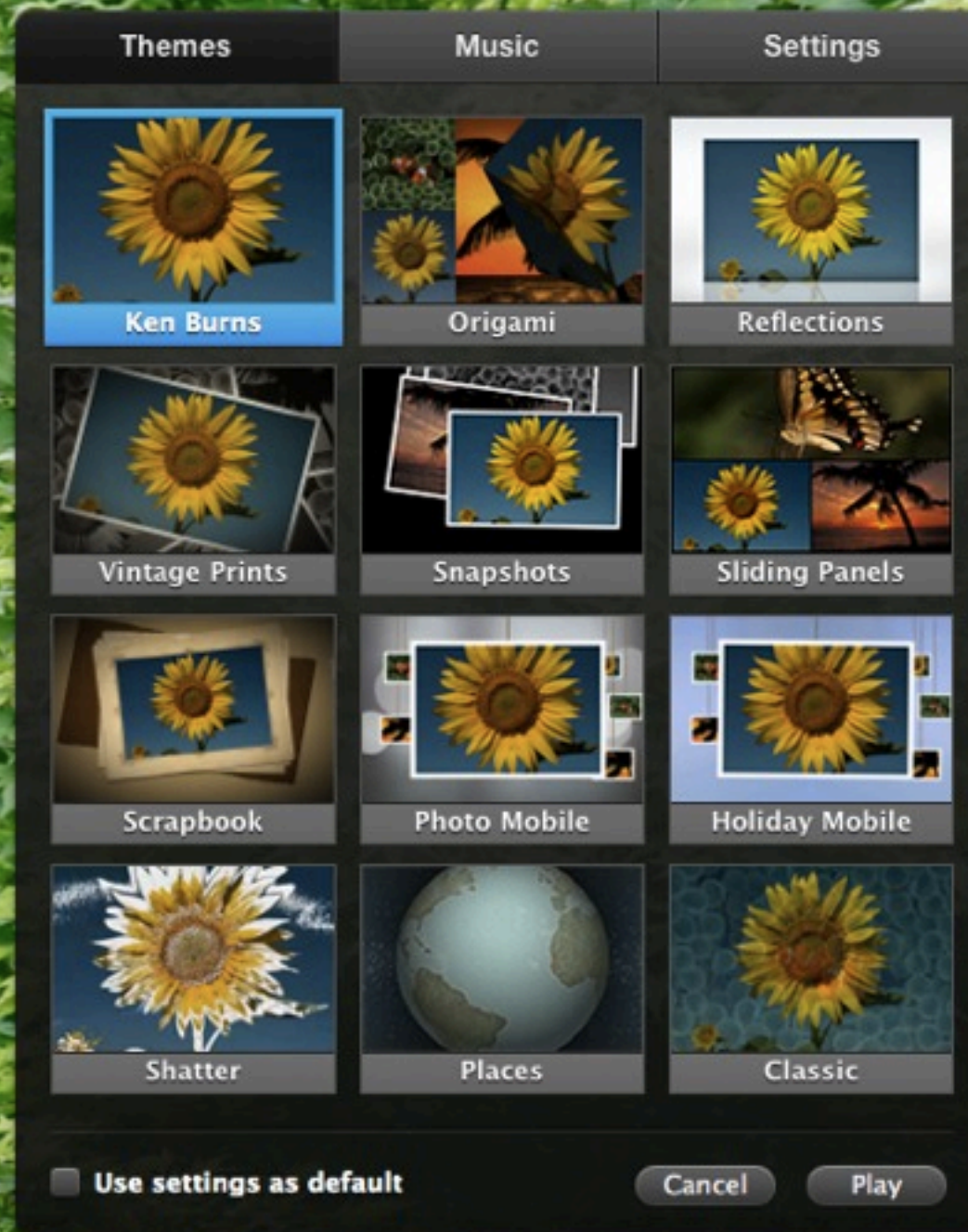
Drag one folder on top of another.



Click Merge to merge them into a single event.



With the merged event selected (it will have a yellow border), click Slideshow.

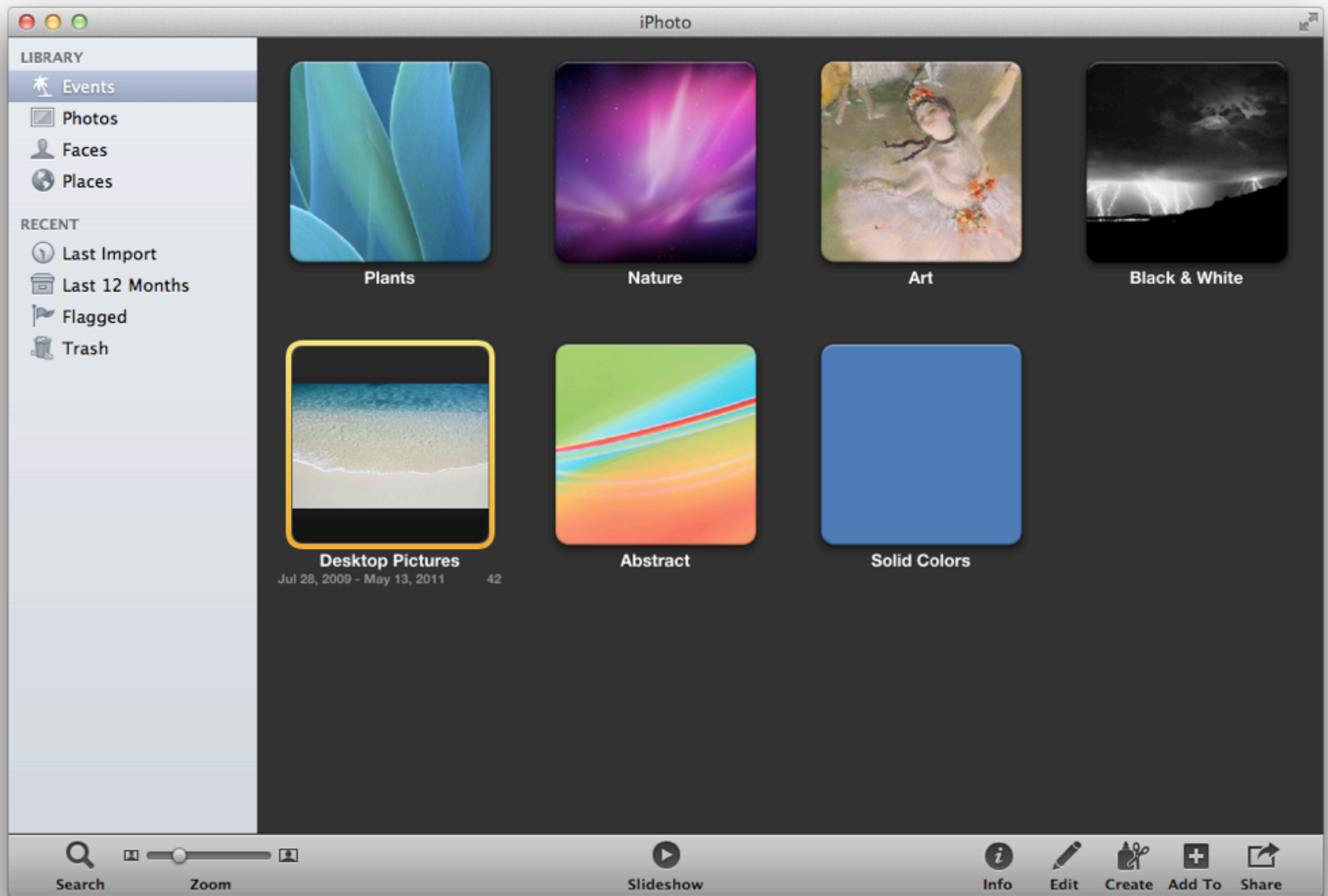


Choose a slideshow theme and click Play.

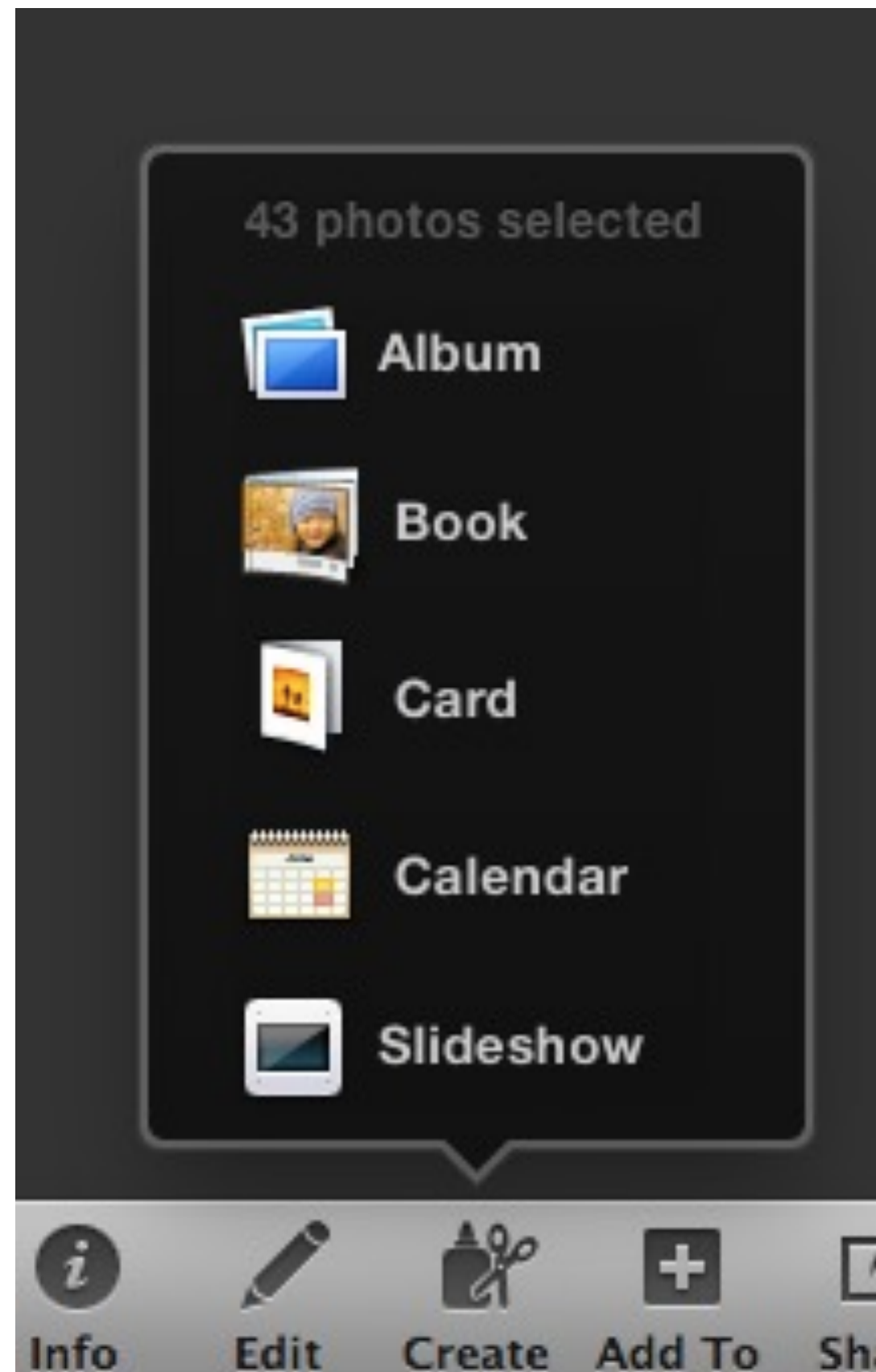
A close-up, slightly low-angle shot of a dense canopy of Japanese maple (Acer japonicum) leaves. The leaves are a vibrant green, with some showing lighter, yellowish-green variegation. The leaves are finely lobed and have serrated edges. The branches are dark and thin, weaving through the foliage. The overall effect is a lush, textured wall of green. The word "Plants" is centered in the lower half of the image in a white, serif font.

Plants

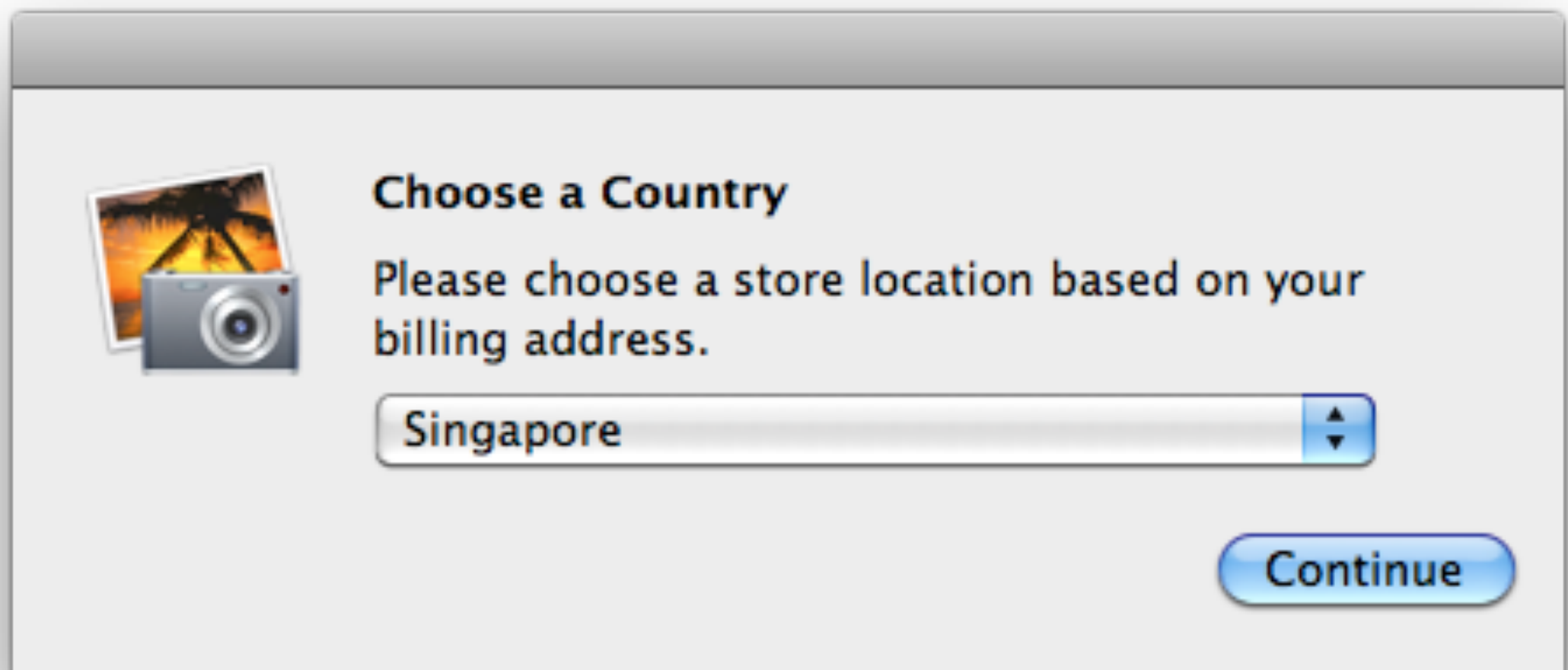
The slideshow plays. Press Esc to exit.



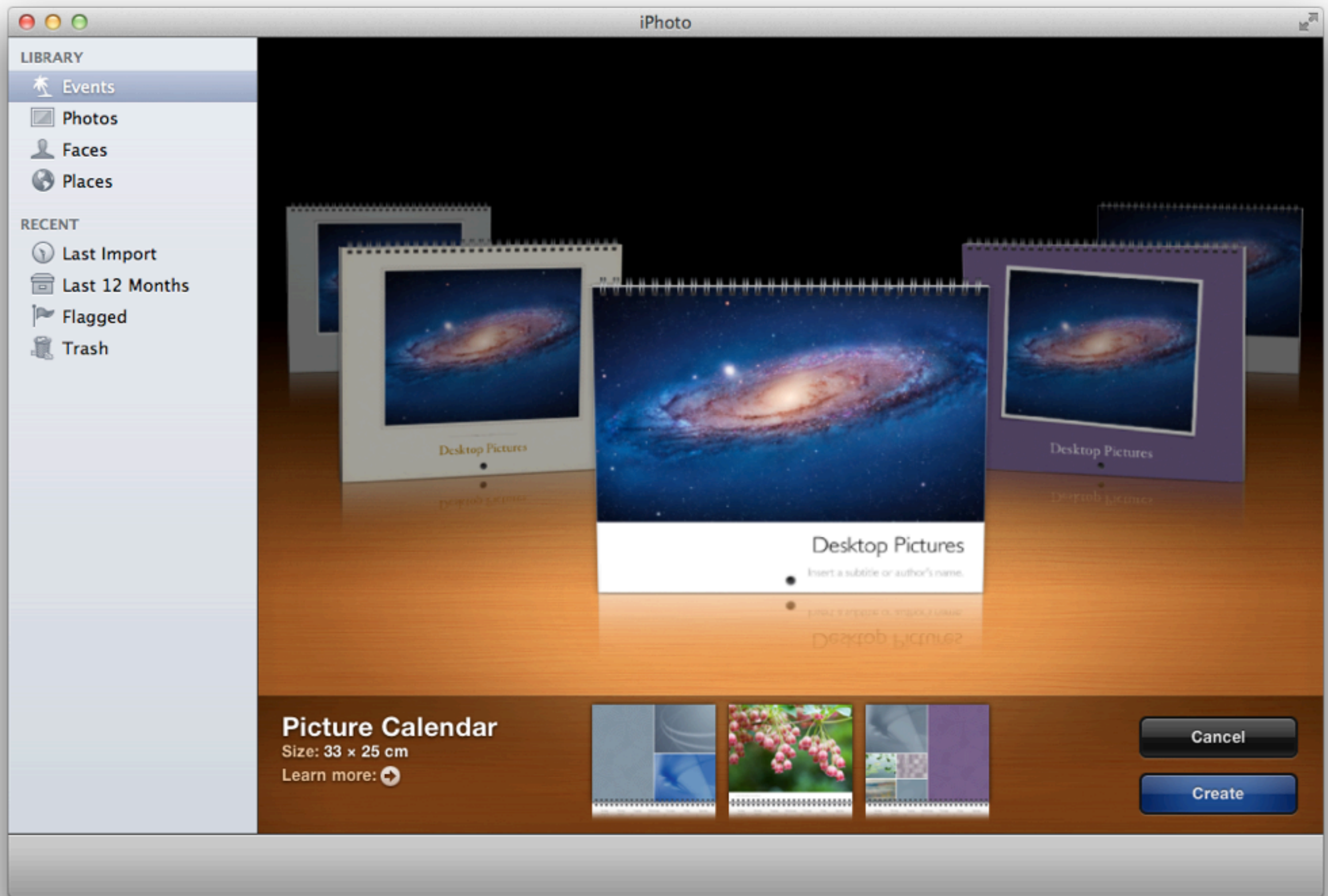
Make sure the merged event is still selected.



Choose Calendar from the Create menu.



If you see this popup, choose Singapore.



Choose a Calendar design that you like.

Start calendar on: January 2011

Number of months: 12

Show national holidays: None

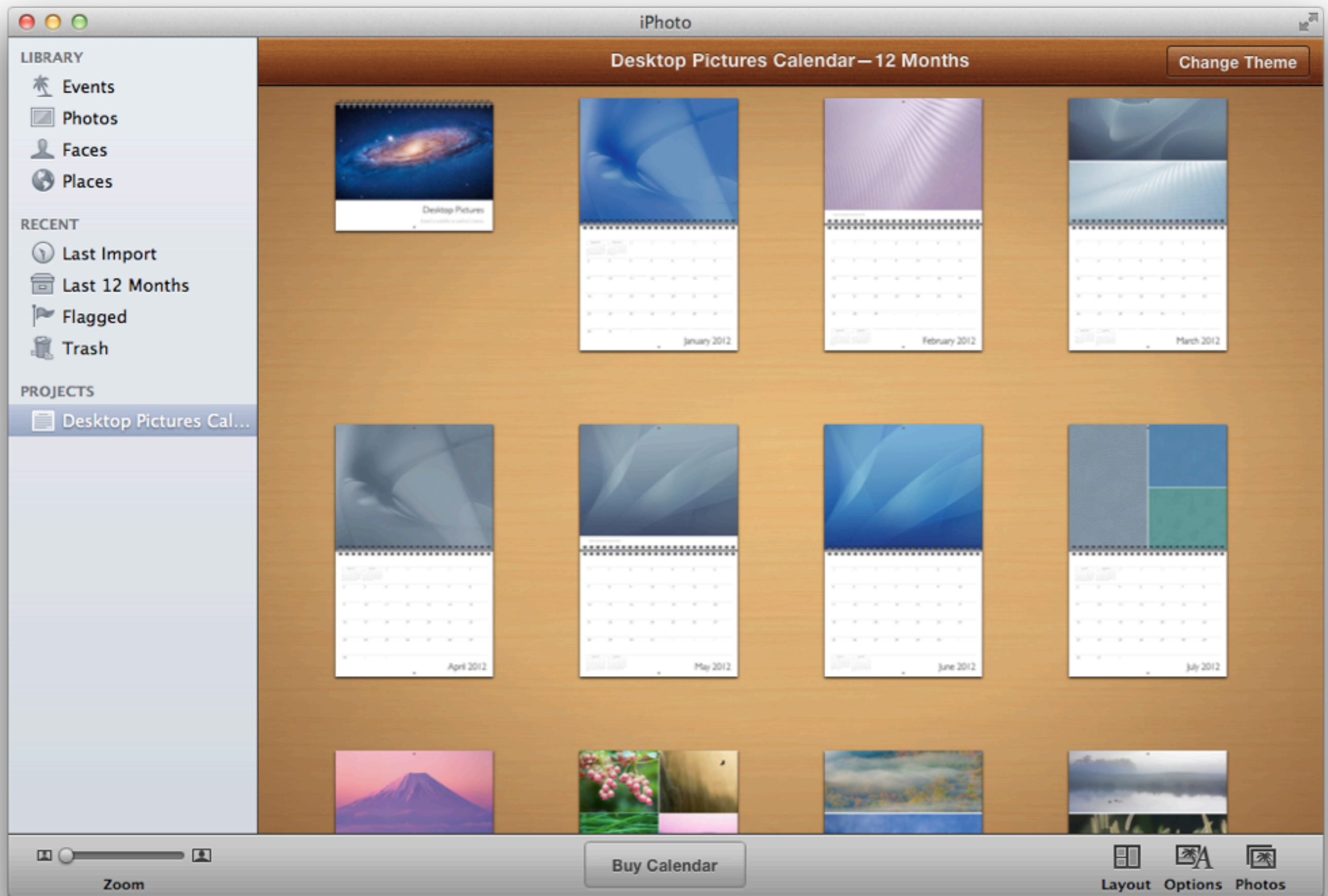
Import from iCal:

- ☐ Home
- ☐ Work

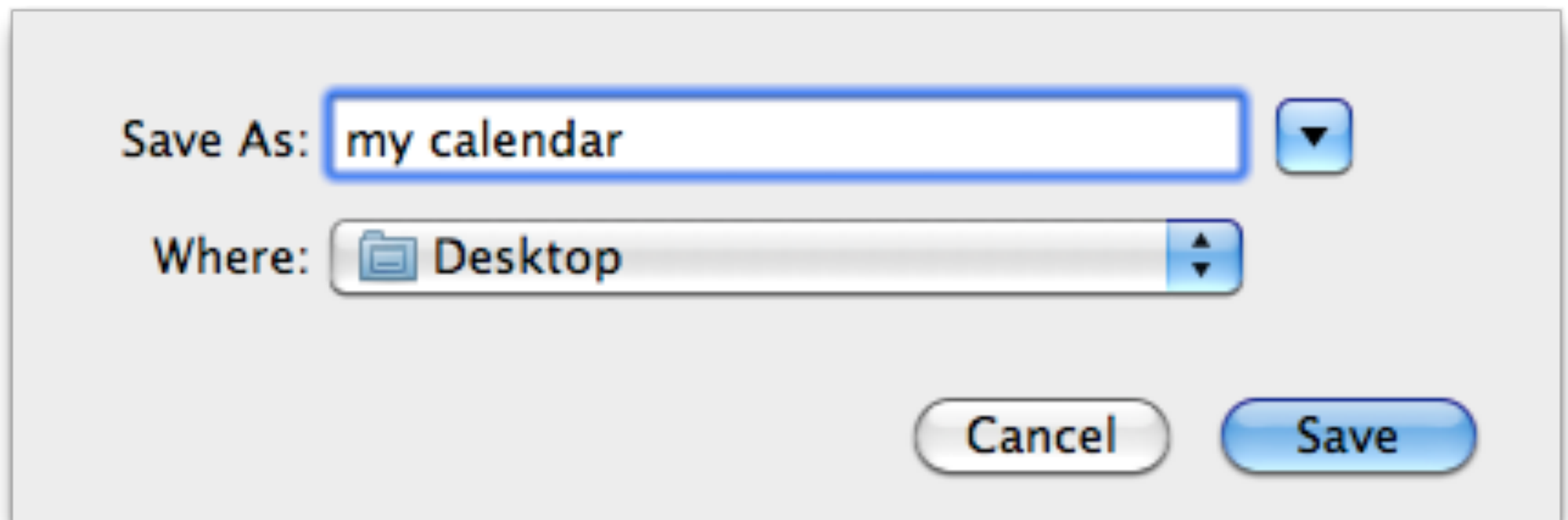
☐ Show birthdays from Address Book

Cancel OK

Click OK.



Your calendar has been laid out. Option-click the Buy Calendar button to save your calendar as a PDF.



Type in a name for your calendar and save it to the Desktop.

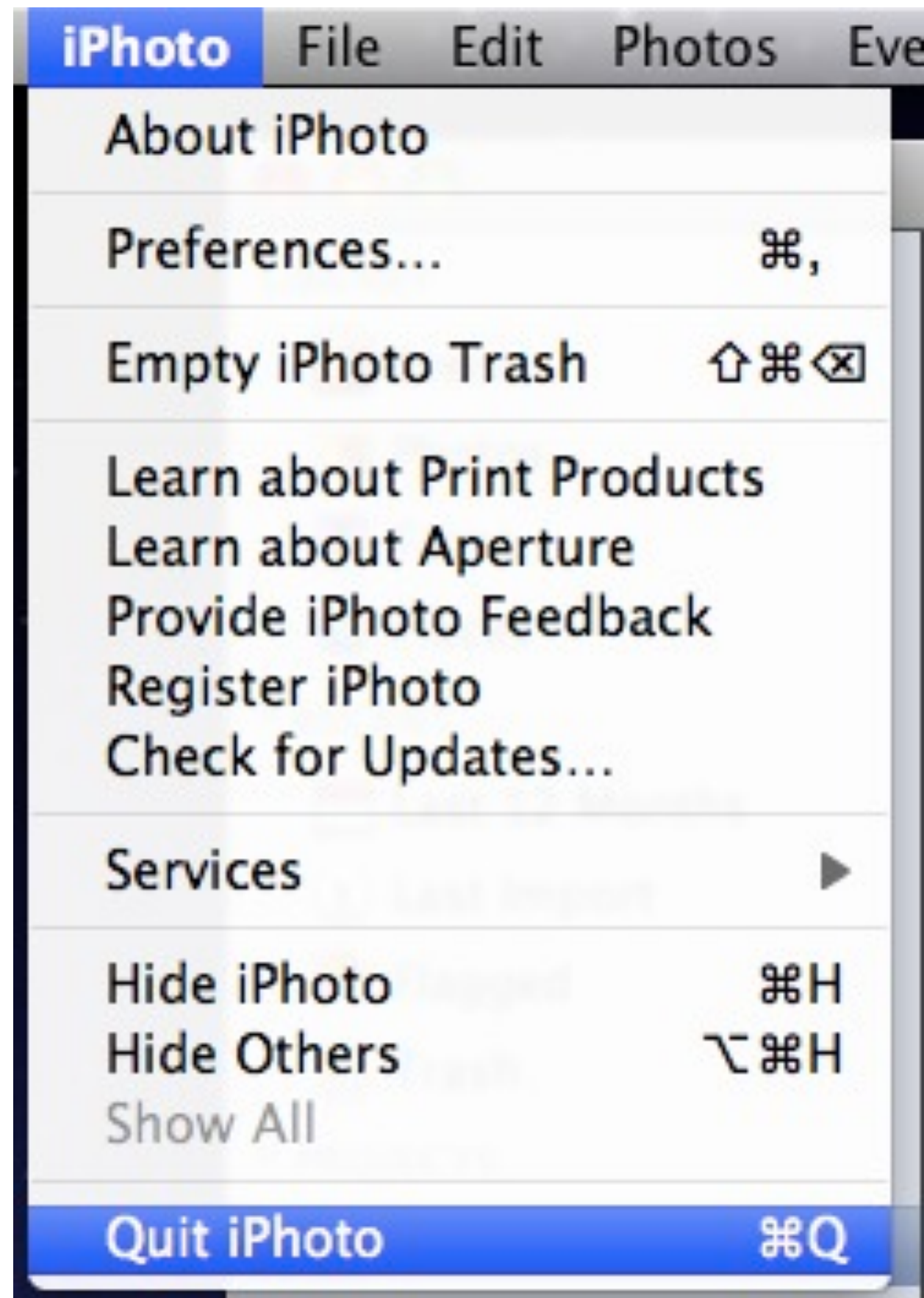
Assembling calendar

Page 2 of 26



Cancel

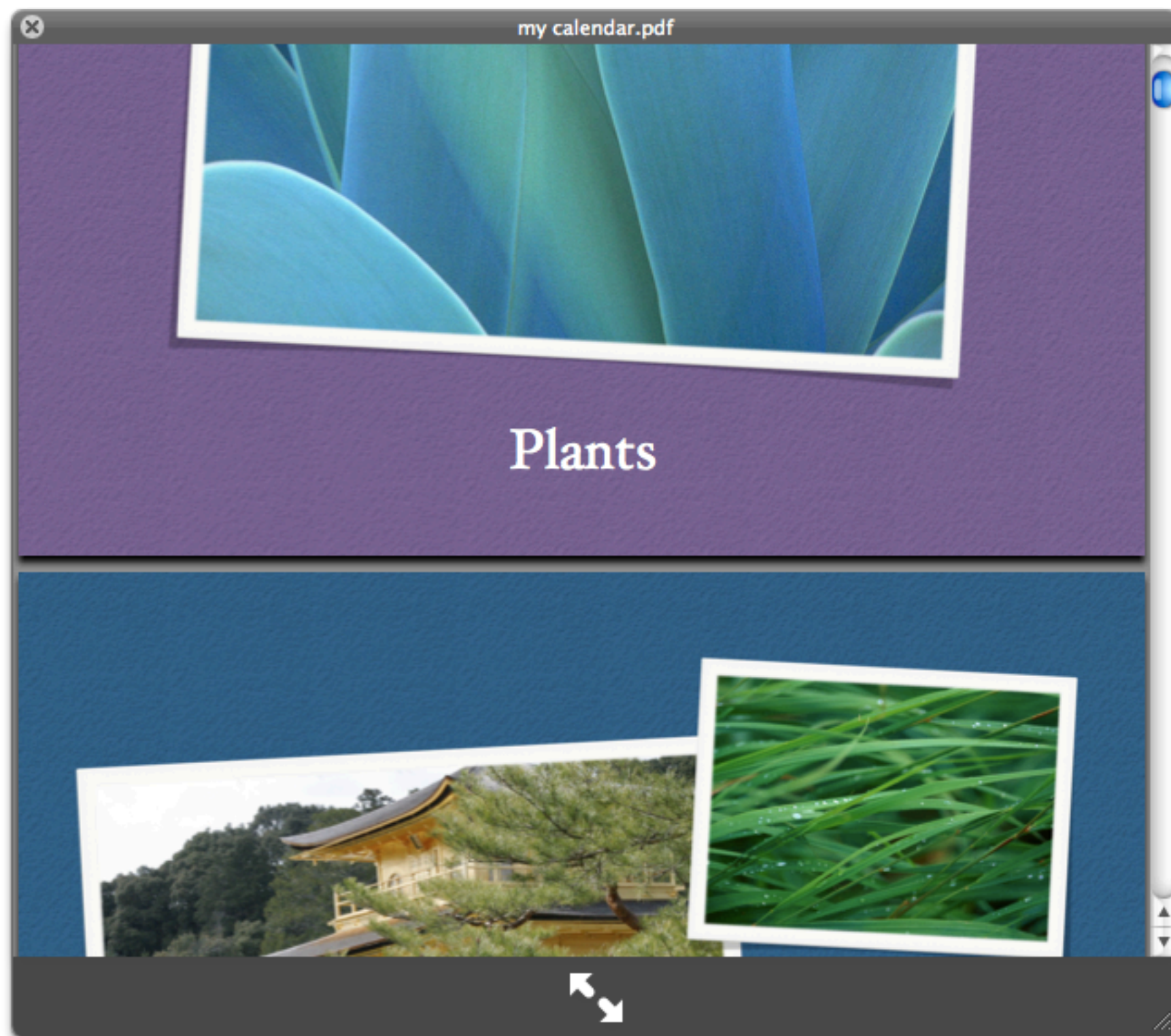
Wait until the save completes.



Quit iPhoto.



You will see your calendar on the Desktop. Click it once to select it.



Press the space bar to preview the calendar.